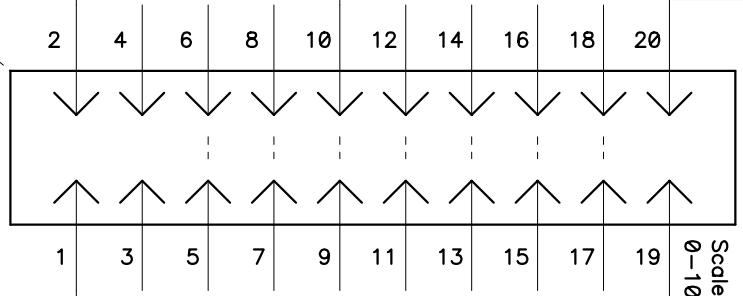


To opamp power  
+12 Vdc @ 100ma  
from bias power supply  
Analog Gnd

14 - 24 VOLTS  
POWER INPUT  
USE ONLY ONE BIAS SUPPLY  
THIS IS THE OPTIONAL INPUT

Isolator Analog  
Constant Current Adjust  
D to A Input  
0 - 4 VOLTS = 0 - 20 AMPS  
Customer control of electronic load  
current from customer D to A

Floating  
Connector shown from top view.  
Pins shown as seen on electronic load.



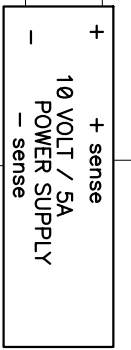
VOLTAGE MONITOR  
Scaled input of voltage  
0-100% = 0-5Vdc out

MODEL NUMBER  
EE15120A

CURRENT MONITOR  
Scaled output of current  
0-100% = 0-4Vdc

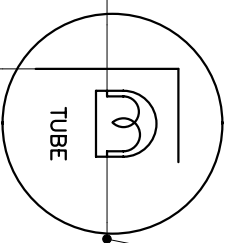
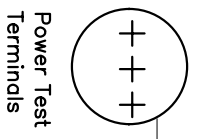
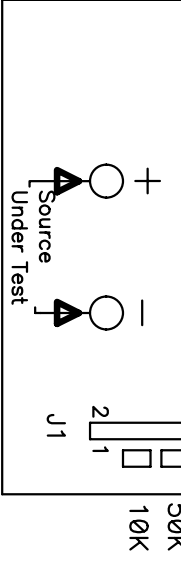
FILAMENT IS ISOLATED FROM CATHODE

0-4 VOLTS = 0 - 20 AMPS  
To Customer A to D reading ( current from load )



Note J1 - Pin 2 and the (-) source under test are connected, never have current flowing through this path. All control signals should be connected to J1-pin 2.  
Only the source under test should be connected to the power test terminal (+) and (-).

Viewed from top of load



Do Not Connect control signals here!

# Executive Engineering

MODEL NUMBER  
EE15120A

Title			ISOLATOR DRIVER		
Size	Number	Rev			
A	301/151 FILAMENT DRIVER	1			

Date	Mon Sep 20, 2004	Drawn by	dw		
Filename	isolator.SCH	Sheet	1	of	1